

## Anti-NKP30 hlgG1 Antibody(BGA-1833)

### Product information

|                 |        |
|-----------------|--------|
| GM-49311AB-10   | 10 µg  |
| GM-49311AB-100  | 100 µg |
| GM-49311AB-1000 | 1 mg   |

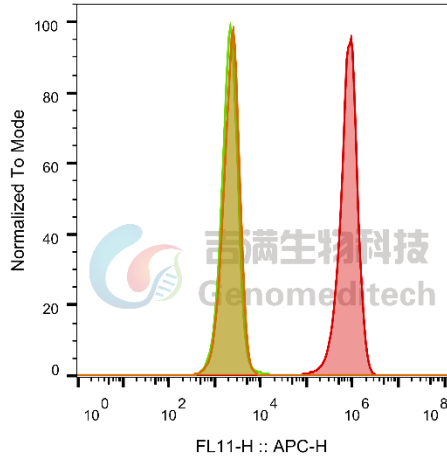
### Antibody Information

|                    |   |
|--------------------|---|
| Species Reactivity | Human; Cynomolgus   |
| Clone              | BGA-1833  |
| Source/Isotype     | Monoclonal human IgG1, κ  |
| Application        | Flow cytometry; Bioactivity-ELISA   |
| Specificity        | Detects NKP30   |
| Gene               | NKP30   |
| Other Names        | 1C7, CD337, LY117, MALS, NKCR3  |
| Gene ID            | 259197(human); 102133932(Cynomolgus);   |
| Background         | NKP30 is a natural killer cell receptor, belonging to the NCR family. It plays a crucial role in natural killer cells (NK cells) by interacting with ligands on the surface of tumor cells, participating in the regulation of NK cell activation and cytotoxicity. Research on NKP30 can help us gain a deeper understanding of the immune regulation mechanisms of NK cells and their potential applications in tumor immunotherapy. In cancer immunotherapy research, the activation of NKP30 can enhance the killing of tumor cells by NK cells, making it a promising target for future cancer treatments. |
| Storage            | Store at 2-8°C short term (1-2 weeks).Store at ≤ -20°C long term. Avoid repeated freeze-thaw.   |
| Formulation        | Phosphate-buffered solution, pH 7.2.  |
| Endotoxin          | < 1 EU/mg, determined by LAL gel clotting assay   |

## Data Examples

Flow cytometry

H\_NKP30 HEK-293 Cell Line (Catalog # GM-C30360) was stained with Anti-NKP30 hlgG1 Antibody(BGA-1833) (Catalog # GM-49311AB) or isotype control antibody, followed by anti-Human IgG APC-conjugated Secondary Antibody.

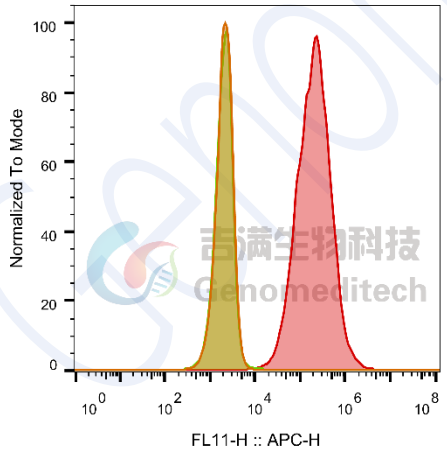


| SampleID                              | Geometric Mean : FL11-H |
|---------------------------------------|-------------------------|
| HEK-293 anti-NKP30+APC-2nd Ab         | 2287                    |
| HEK-293 H_NKP30 H_IgG+APC-2nd Ab      | 2145                    |
| HEK-293 H_NKP30 anti-NKP30+APC-2nd Ab | 7.81E5                  |

Fig. FACS

Flow cytometry

Cynomolgus\_NKP30 CHO-K1 Cell Line(Catalog # GM-C33009) was stained with Anti-NKP30 hlgG1 Antibody(BGA-1833) (Catalog # GM-49311AB) or isotype control antibody, followed by anti-Human IgG APC-conjugated Secondary Antibody.



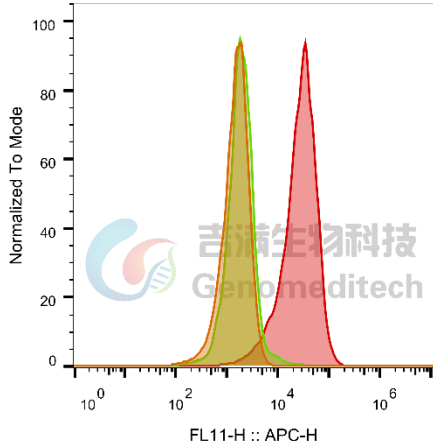
| SampleID                                | Geometric Mean : FL11-H |
|---|-------------------------|
| CHO-K1 anti-NKP30+APC-2nd Ab            | 2102                    |
| CHO-K1 Cyno_NKP30 H_IgG+APC-2nd Ab      | 2075                    |
| CHO-K1 Cyno_NKP30 anti-NKP30+APC-2nd Ab | 196894                  |

Fig. FACS

Version:3.3

Flow cytometry

H\_NKp30 Reporter Jurkat Cell Line (Catalog # GM-C29776) was stained with Anti-NKP30 hIgG1 Antibody(BGA-1833) (Catalog # GM-49311AB) or isotype control antibody, followed by anti-Human IgG APC-conjugated Secondary Antibody.



| SampleID                                     | Geometric Mean : FL11-H |
|--|-------------------------|
| Jukat anti-NKp30+APC-2nd Ab                  | 1417                    |
| H_NKp30 reporter Jukat H_IgG+APC-2nd Ab      | 1822                    |
| H_NKp30 reporter Jukat anti-NKp30+APC-2nd Ab | 25745                   |

Fig. FACS

Activation assay

Serial dilutions of Anti-NKP30 hIgG1 Antibody(BGA-1833) (Catalog # GM-49311AB) or isotype control antibody were added into H\_NKp30 Reporter Jurkat Cell Line(Catalog # GM-C29776). EC50 for this effect was 1.054 µg/mL.

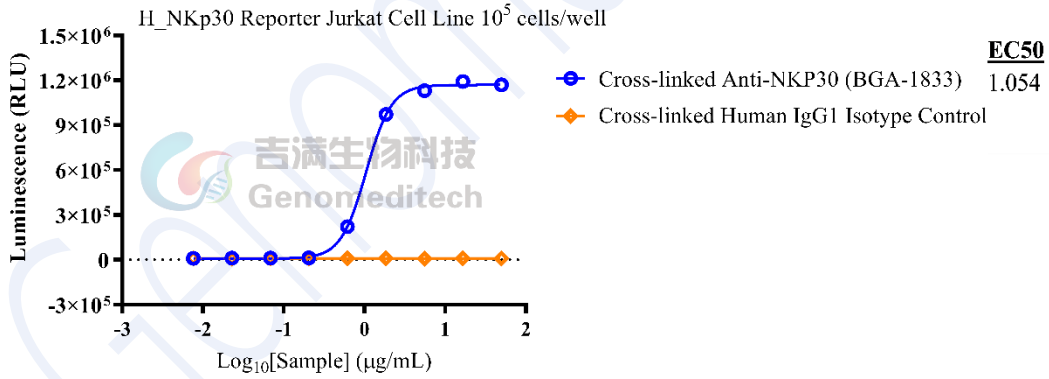


Fig. assay

Bioactivity-ELISA

Human NCR3(NKP30) Protein; His Tag (Catalog # GM-87643RP) was immobilized at 1  $\mu\text{g/ml}$  (100  $\mu\text{L/well}$ ). Increasing concentrations of Anti-NKP30 hlgG1 Antibody(BGA-1833) (Catalog # GM-49311AB) were added.

**Bioactivity-ELISA**

0.1  $\mu\text{g}$  Human NCR3(NKP30) Protein; His Tag of per well

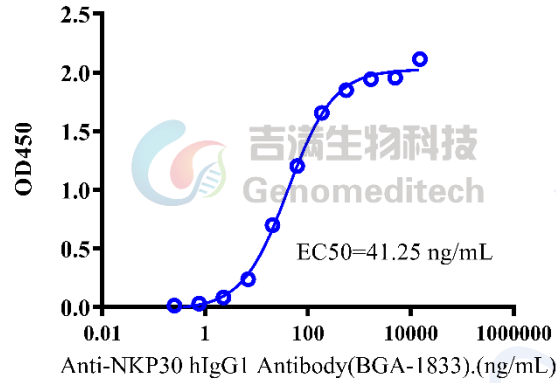


Fig. assay